

**Lefty (LEFTB) Antibody (C-term)**  
**Purified Rabbit Polyclonal Antibody (Pab)**  
**Catalog # AP7297b****Specification**

---

**Lefty (LEFTB) Antibody (C-term) - Product Information**

Application	IHC-P, WB,E
Primary Accession	<a href="#">O75610</a>
Reactivity	Human
Host	Rabbit
Clonality	Polyclonal
Isotype	Rabbit IgG
Calculated MW	40880
Antigen Region	283-314

**Lefty (LEFTB) Antibody (C-term) - Additional Information****Gene ID** 10637**Other Names**

Left-right determination factor 1, Left-right determination factor B, Protein lefty-1, Protein lefty-B, LEFTY1, LEFTB, LEFTYB

**Target/Specificity**

This Lefty (LEFTB) antibody is generated from rabbits immunized with a KLH conjugated synthetic peptide between 283-314 amino acids from the C-terminal region of human Lefty (LEFTB).

**Dilution**

IHC-P~~1:10~50

WB~~1:1000

E~~Use at an assay dependent concentration.

**Format**

Purified polyclonal antibody supplied in PBS with 0.09% (W/V) sodium azide. This antibody is prepared by Saturated Ammonium Sulfate (SAS) precipitation followed by dialysis against PBS.

**Storage**

Maintain refrigerated at 2-8°C for up to 2 weeks. For long term storage store at -20°C in small aliquots to prevent freeze-thaw cycles.

**Precautions**

Lefty (LEFTB) Antibody (C-term) is for research use only and not for use in diagnostic or therapeutic procedures.

**Lefty (LEFTB) Antibody (C-term) - Protein Information****Name** LEFTY1

**Synonyms** LEFTB, LEFTYB

**Function** Required for left-right axis determination as a regulator of LEFTY2 and NODAL.

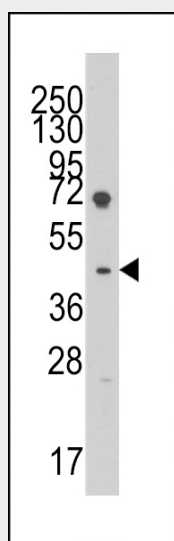
**Cellular Location**  
Secreted.

### Lefty (LEFTB) Antibody (C-term) - Protocols

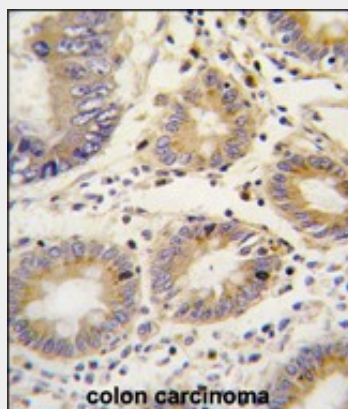
Provided below are standard protocols that you may find useful for product applications.

- [Western Blot](#)
- [Blocking Peptides](#)
- [Dot Blot](#)
- [Immunohistochemistry](#)
- [Immunofluorescence](#)
- [Immunoprecipitation](#)
- [Flow Cytometry](#)
- [Cell Culture](#)

### Lefty (LEFTB) Antibody (C-term) - Images



Western blot analysis of anti-LEFTB(C-term) Pab (Cat.#AP7297b) in HL60 cell line lysates (35ug/lane). LEFTB(arrow) was detected using the purified Pab.



Formalin-fixed and paraffin-embedded human colon carcinoma tissue reacted with LEFTB antibody (C-term) (Cat.#AP7279b), which was peroxidase-conjugated to the secondary antibody, followed by DAB staining. This data demonstrates the use of this antibody for immunohistochemistry; clinical relevance has not been evaluated.

#### **Lefty (LEFTB) Antibody (C-term) - Background**

LEFTB is a member of the TGF-beta family of proteins. A similar secreted protein in mouse plays a role in left-right asymmetry determination of organ systems during development. Alternative processing of this protein can yield three different products.

#### **Lefty (LEFTB) Antibody (C-term) - References**

Kosaki K., Am. J. Hum. Genet. 64:712-721(1999)  
Dvash, T., Stem Cells 25 (2), 465-472 (2007)  
Besser, D., J. Biol. Chem. 279 (43), 45076-45084 (2004)